

# Year 6 Parents' Meeting

*20<sup>th</sup> September 2019*



# Year 6 Staff

- Miss Boron (6ZB)
- Miss Lakin (6KL)
- Mr Markham-Jones (6AMJ)
- Miss Connaire
- Miss Grant
- Mrs Kerrigan (English/Maths Support Assistant)
- Mrs Bhella (SEN)
- Subject Specialist Teachers
- Fr. Phillip Griffin (Year 6 Governor)



# Important Term Dates:

Date:	Event:
September 27 <sup>th</sup> - 1:15pm	Alton Castle Meeting
October 7 <sup>th</sup> - 9 <sup>th</sup>	Alton Castle Trips
15 <sup>th</sup> November - 2:15pm	Y6 Parents' Meeting
6 <sup>th</sup> November - 2:15pm	Confirmation Meeting
12 <sup>th</sup> -13 <sup>th</sup> November	Maths Parents' Evening
Wednesday 4 <sup>th</sup> December 7pm	Confirmation
17 <sup>th</sup> December - 6pm	Carol Service
13 <sup>th</sup> January - 9am	SATs Meeting
w/b 27 <sup>th</sup> January	Maths Open Week
17 <sup>th</sup> -18 <sup>th</sup> March	English Parents' Evening
w/b 11 <sup>th</sup> May	SATs Week
w/b 18 <sup>th</sup> May	Paris
22 <sup>nd</sup> June	Sports Taster Day
8 <sup>th</sup> July	Y6 Sports Day
14 <sup>th</sup> July TBC	Production
16 <sup>th</sup> July	Leavers' Mass

Please note:  
A copy of this  
presentation will  
be available from  
the school's  
website  
[www.stberns.co.uk](http://www.stberns.co.uk)

# Reminder

## Punctuality

Prompt arrival at school is essential to ensure your child's attendance record is not adversely affected.

Doors open at 8.30am and children must be in class by 8.45am at the latest.



## Attendance

- 95% - 100% is acceptable (Illness)
- Phone call to the office on first day of absence, followed up with letter on return to school.
- If a medical appointment has to be in school time, please forward letter / slip to school.



## Year 6

- Setting teacher for English and Maths.
- Foundation subjects taught predominantly by the class teacher.

▪ Subject Specialist Teaching some afternoons



## When does my child have homework?

**ALL** children will be given homework each week.

English is given out on a Tuesday and returned on Friday.

Maths is given on a Friday and returned on a  
Monday/Tuesday.

Homework that is handed in late will not be marked. Children will lose their golden time for the week if they fail to hand in their homework.



# Accelerated Reader

## Star Reading

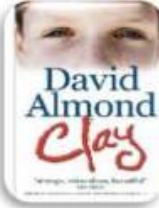
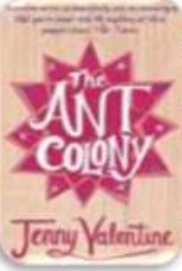
- 20 minute computer-adaptive test used to assess reading ability.
- Tracks reading growth.
- Provides students with a personalised reading range called the ZPD, and teachers with data to monitor student progress.





# Zone of Proximal Development (ZPD)

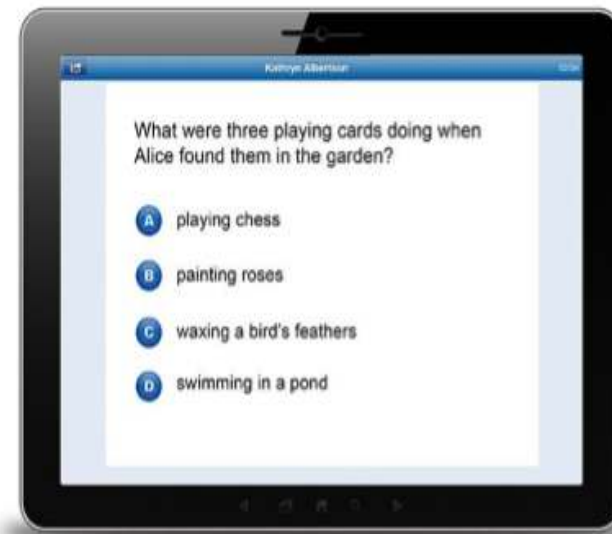
A range of book levels recommended for each student based on their reading ability  
The student has free rein to choose books from within their entire ZPD range

Too Easy	ZPD: Just Right				Too Hard
2.8	3.2	3.8	4.4	5.0	5.4
					




# Renaissance Accelerated Reader

- A database of over 27,000 book quizzes
- Measures comprehension
- All quizzed books have a Book Level
  - An estimate of the reading difficulty of the text
  - Based on average sentence length and the difficulty of words
  - Ranges between Book Levels 0.2-13.5



# Teachers monitor pupils' progress

- Accelerated Reader provides instant feedback and tracks all scores
- Teachers monitor quiz results and provide encouragement & guidance
- Students aim to average 85% or above on their comprehension quizzes. This indicates good comprehension and will lead to greater progress in reading ability

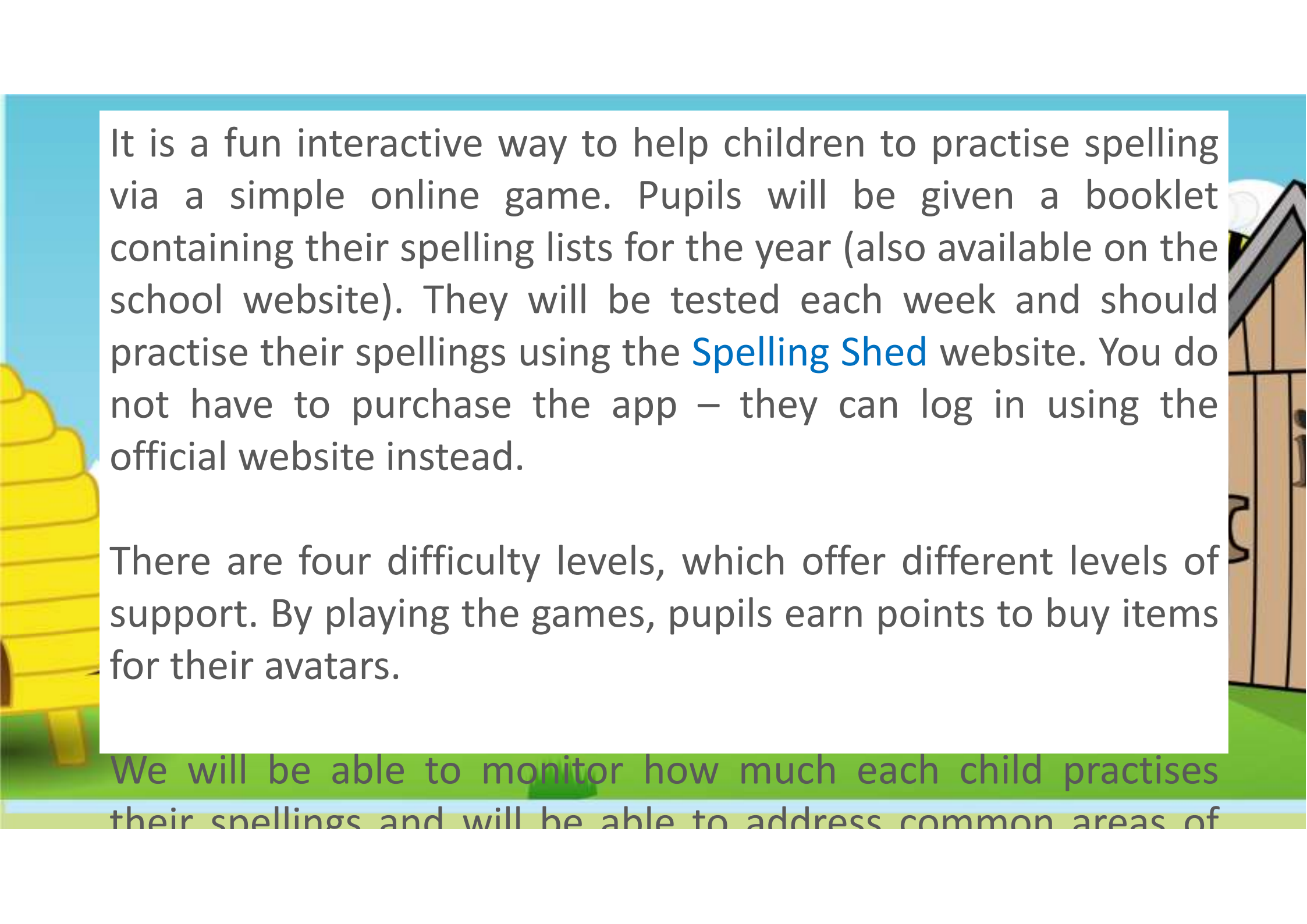
<b>Accelerated Reader</b> <b>Reading Practice TOPS Report</b> <b>Reprint for Annie Fernandez</b> <small>Printed 07 August 2009 16:07:18</small>	
<small>School: Renaissance Learning Test School</small>	<small>Year: 7</small>
<small>Class: Year 7</small>	<small>Teacher: Mr R Meiland</small>
What I Read	How I Did
Eco-Wolf and the Three Pigs: Seriously Silly Stories by Anshu Laurence  ATOS BL: 3.9 Quiz Number: 203587 Quiz Date: 12/05/2009 13:17 Interest Level: Lower Years (LY) TWR: Read Independently	Correct: 10 of 10 Percentage Correct: 100% ***** Awesome, Annie!  Points Earned: 0.5 of 0.5
<b>My Progress in 2008 - 2009</b> <small>01/08/2008 - 12/05/2009 (77% Complete)</small>	
Average % Correct: 90.2% 	Points Earned: 53.6 No Target Set
Average ATOS BL: 3.2 No Target Set	<b>Marking Period Totals</b> Quizzes Passed: 111 Quizzes Taken: 111 Words Read: 156,976



# Spelling Shed

The background of the slide is a colorful cartoon illustration. At the top, the words "Spelling Shed" are written in a large, bold, yellow font with a thick black outline. Below the title, on the left, is a yellow beehive with a small brown entrance and two yellow legs. A cartoon bee with large eyes is flying near the beehive. On the right, there is a wooden shed with a brown door and a small window. Another cartoon bee is flying near the shed. The background is a light blue sky with a white cloud on the left and a green grassy field at the bottom.

The Spelling Shed is a new resource that we are introducing from year 1 to year 6 this academic year. It will form part of your child's weekly homework.



It is a fun interactive way to help children to practise spelling via a simple online game. Pupils will be given a booklet containing their spelling lists for the year (also available on the school website). They will be tested each week and should practise their spellings using the [Spelling Shed](#) website. You do not have to purchase the app – they can log in using the official website instead.

There are four difficulty levels, which offer different levels of support. By playing the games, pupils earn points to buy items for their avatars.

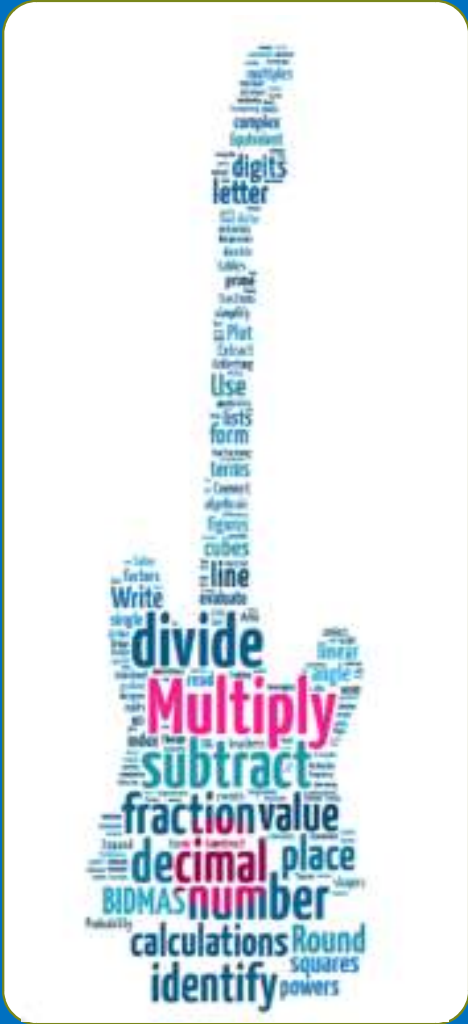
We will be able to monitor how much each child practises their spellings and will be able to address common areas of



Times Tables Rock Stars is a fun, game based way to learn and practise times tables on a computer or tablet.

Each child will have a log in. They will create an avatar and be part of a 'band'.

Each child will have a log in. They will create an avatar and be part of a 'band'.



Please encourage  
your child to play  
and practise at  
home. We will be  
celebrating their  
successes at  
school too.



@TTRockStars



ttrockstars.com



# Assessment Terminology

- A child's attainment is judged on whether they are working Below Expected, Towards Expected or At Expected standards for their age at the end of the academic year.
- **Below Expected:** they have not met 20% of their year band's curriculum and may be working within the curriculum for the year below their age.
- **Towards Expected:** they are working within their year band's curriculum but have not yet met 60% of the objectives within it.
- **At Expected:** they have met 60% or more of the objectives within their year band's curriculum.
- By the end of the academic year, the majority of children should be working at expected standards for their year band (i.e. have met at least 60% of the objectives within the curriculum).





# National Curriculum Tests (SATs)

*Currently scheduled nationally to take place in the week beginning 11th May*

## English

- Reading comprehension test
- Grammar, punctuation and spelling test (2 papers)
- Writing to be teacher assessed

## Mathematics

- 1 arithmetic test
- 2 written reasoning papers - no calculator.

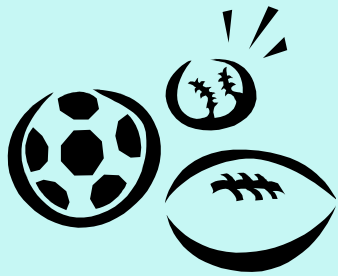


# Year 6 Curriculum

- In Y6, as part of the online safety curriculum, we will cover:
  - Safe searching
  - SMART rules
  - Cyberbullying
  - Social networking
  - Online chat safety
  - Mobile phones safety



# PE



- PE kits should be kept in school at all times.
- Kit consists of black pumps, black shorts and a white t-shirt.
- In the winter, pupils are allowed plain tracksuits for outdoor sports.
- Indoor kit must still be kept in school during winter months, children are not expected to wear tracksuits inside.



# After School Clubs

There will be a range of after school clubs offered at different times of the year to Year 6.

Letters will be sent home regarding any clubs available.



## Trips

- All trips will now be charged. Parents will be required to make a voluntary contribution and if the cost of the trip is not covered it will be cancelled.
- We will no longer be asking for a £10 school fund contribution and are no longer in a financial position to subsidise these trips.



## Totally Trusted

- St. Bernadette's School rewards good behaviour.
- Children in Year 6 work towards their behaviour certificate in the Autumn Term and their Totally Trusted Badge during the Spring and Summer Terms.
- If children have lost their badges from previous years, new ones may be purchased by sending £1 in a labelled envelope into school.



# Confirmation

- All children take part in the programme of preparation through work completed in R.E. lessons.
- In order to be confirmed, children will need:
  - ✓ Their date of baptism.
  - ✓ The name of the church they were baptised.
  - ✓ To have made their First Holy Communion

## Relevant Dates

- Alton Castle: 7th-9th October
- Confirmation: Wednesday 4<sup>th</sup> December



# Residential Trips

## Alton Castle

▪ 7<sup>th</sup> – 9<sup>th</sup> October

Teacher in Charge

Mr Markham-Jones

## Paris

▪ 18<sup>th</sup> – 22<sup>th</sup> May

Teacher in Charge

Miss Lakin





We regularly update both the school website and our school Twitter account with photos and videos from lessons, trips and activities. Following these pages will help to keep you informed about what your child is doing in year 6.

[@StBernsPrimary](#)



[www.stberns.co.uk](http://www.stberns.co.uk)

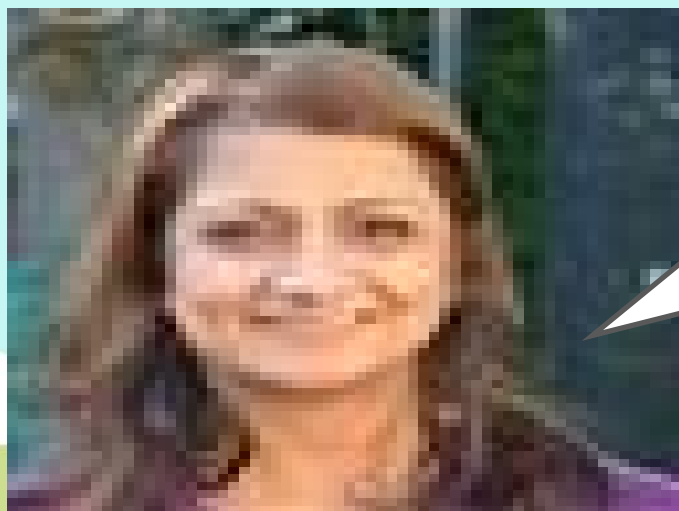


Open and honest  
communication

Appropriate and effective  
teaching and learning

A Partnership approach

## St Bernadette's SEND Offer



Hello and welcome! My name is Mrs Bhella and I am the SENCo. I work with children, teachers, parents and agencies to ensure that our pupil's needs are met.

Please visit our school website to find out what we can offer you, if you think your child has special educational needs.

SENCo means Special Educational Needs Co-ordinator

# Open and Honest Communication

How to speak to the SENCo if you have a concern.

- We always encourage you to talk to your child's class teacher in the first instance.
- Speak to a member of the office team to find out when the SENCo may be available (**SENCO Surgery** Monday's 1.30 to 3pm)
- Make an appointment to see her or ask if she can telephone you.
- You can also email her direct on [r.bhella@stberns.bham.sch.uk](mailto:r.bhella@stberns.bham.sch.uk)
- Direct phone number - 0121 783 7232 (option 3)

We can hold review meetings with parents/carers during the school day so that you can find out how your child is doing in school.



# Secondary School Transfer



# Transfer Process

- Refer to Birmingham City Council website for information on schools and the transfer process.
- Using the online application process, identify six *different* schools you would like your child to attend.
- Rank your six preferences in the order of schools you most prefer.
- Check the online booklet to make sure your child meets the entry criteria for the schools you prefer.
- Has your child satisfied the entry criteria for the *past 2 years*?



# Transfer Process

- *Make sure that you choose at least one school where your child meets ALL entry requirements.*
- List your choices in order of preference (include grammar schools and schools in other authorities).
- Give the name and date of birth of any brother or sister who is already at a school you are applying to.
- Check how far you live from the schools you prefer (by straight line measurement in Km or m). Help can be obtained from Admissions and Appeals on 0121 303 1888.



# Secondary School Transfer Information

- Birmingham operates a “co-ordinated admissions scheme” with neighbouring areas. This means that if you live in Birmingham, you can use the Birmingham application system to apply for secondary schools and academies both inside and outside the Birmingham area.
- If you don't live in Birmingham but want to apply for a Birmingham secondary school, you should do this via the application process of your own local authority.
- Each child will receive a personalised letter giving details about the application process. If you don't receive a letter, you need to contact 01213031888. If you do not live in Birmingham, you should receive a letter from your own local authority.





# Secondary School Transfer Information

- You must apply online. All relevant information, including the Secondary Education Booklet which outlines this process, is available from:
  - [www.birmingham.gov.uk/schooladmissions](http://www.birmingham.gov.uk/schooladmissions)
- If you do not have access to the internet, you can complete the form here after the meeting today, or make an appointment for another time.





# Key Dates:

Date:	Event:
September	Secondary schools hold open evenings.
1 October	Recommended date for submitting applications.
31 October	Final date for applications
2nd March	Email offers
16 <sup>th</sup> March	Deadline for accepting the offer
30 <sup>th</sup> March	Deadline for submitting appeals
May/June	Appeals heard
1 <sup>st</sup> July	Induction day at Secondary schools

# Information to Note:

- You must complete the form belonging to the local authority that you pay council tax to. List any schools (regardless of authority) on this form. The only exception to this is independent schools who must be contacted directly.
- You must only fill in one form.



# Information to Note:

- If you live in Birmingham and list only one school as a preference, and your child cannot be offered a place at that school, then a place will be offered at an alternative school. This will be one of the nearest schools with a place available after offers have been made to all other applicants who applied on time. It is well worth listing more than one preference even if you are confident that your child will be offered a place at a certain school based on previous years' admission patterns. Due to demographic changes from year to year, there is no guarantee that a pattern will continue in future.



# Secondary School Information

- We will now hand over to representatives of some of our local secondary schools.
- Year 6 teachers will be available after the meeting if anyone would like to discuss any year 6 issues or the Secondary School Transfer process with us in more detail.

THANK YOU FOR COMING TO SUPPORT YOUR CHILD  
AND OUR SCHOOL.

