

# YEAR 4 WELCOME MEETING 2021

Year 4 Teachers:

- Mrs Brownhill
- Miss Hulse
- Miss Manders
- Mr Wayne

Y4 Teaching Assistant: Mrs Colclough

# COMING UP IN YEAR 4

- 20th September - Staff training day (no children in school)
- W/B 11<sup>th</sup> October - Reading open week (subject to change/cancellation)
- W/B 18<sup>th</sup> October - International Week (India)
- 1<sup>st</sup> November - Staff training day (no children in school)

# COMING UP IN YEAR 4

## ➤Parent's Evenings

Maths: 9<sup>th</sup> & 10<sup>th</sup> November 2021

English: 15<sup>th</sup> & 16<sup>th</sup> March 2022

➤24<sup>th</sup> January - Maths open week (subject to change/cancellation)

➤Newcastle Trip - Summer Term, dates to be confirmed.

➤Fortnightly news letters and reading records contain further information on dates and events.

# REMINDER



## Punctuality

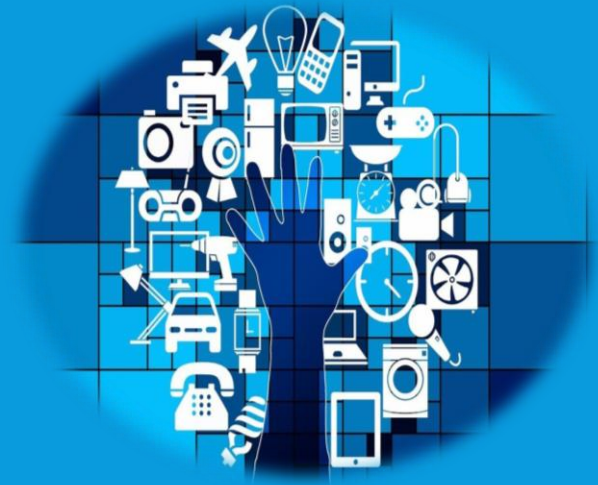
Prompt arrival at school is essential to ensure your child's attendance record is not adversely affected.

Parents will be able to drop off from 8.30am and school gates will close at 8.45am.

# COMPUTING

In Y4, as part of the Computing curriculum, we will cover:

- Programming
- Word Processing
- Animation



The computing units incorporate key knowledge and understanding to ensure preparation for using technology devices safely and responsibly. We will also explore Online Relationships, Online Reputation and Managing Online Information.

## Get in control of parental controls



If using a  
smartphone, check  
content lock is set



Set parental  
controls on your  
home broadband



Control app  
downloads  
and purchases



Make the  
games console  
safe and secure



Use safety mode  
on YouTube  
and Google



If using social  
networks, check  
privacy settings

Go to [internetmatters.org/controls](https://internetmatters.org/controls)  
for step-by-step guides

# ASSESSMENT TERMINOLOGY

- A child's attainment is judged on whether they are working
  - Towards Expected,
  - At Expected,
  - At Greater Depth within the expected standard for their age at the end of the academic year.
- By the end of the academic year, the majority of children should be working at expected standard for their year band.

# ASSESSMENT TERMINOLOGY

- Towards Expected: they are working within their year band's curriculum but have not yet met all of the objectives within it.
- At Expected: they have met the objectives within their year band's curriculum.
- At Greater Depth: they have shown a greater understanding of objectives within their year band's curriculum.



# WHEN DOES MY CHILD HAVE HOMEWORK?

ALL children will be given homework each week on Seesaw.

English is given out on a Tuesday and returned on Friday.

Maths is given out on a Friday and returned on Tuesday.

Homework that is handed in late will not be marked.

Homework that is late or missing on 3 occasions will be followed up with a letter.

# MULTIPLICATION TABLES CHECK

- From the 2019/20 academic year onwards, we will be required to administer an online multiplication tables check (MTC) to year 4 pupils.
- The National Curriculum specifies that pupils should be taught to recall the multiplication tables up to and including  $12 \times 12$  by the end of year 4.

# MULTIPLICATION TABLES CHECK

- The purpose of the MTC is to determine whether pupils can recall their times tables fluently, which is essential for future success in mathematics. It will help schools to identify pupils who have not yet mastered their times tables, so that additional support can be provided.
- The MTC will take place in June 2022.

# MULTIPLICATION TABLES CHECK

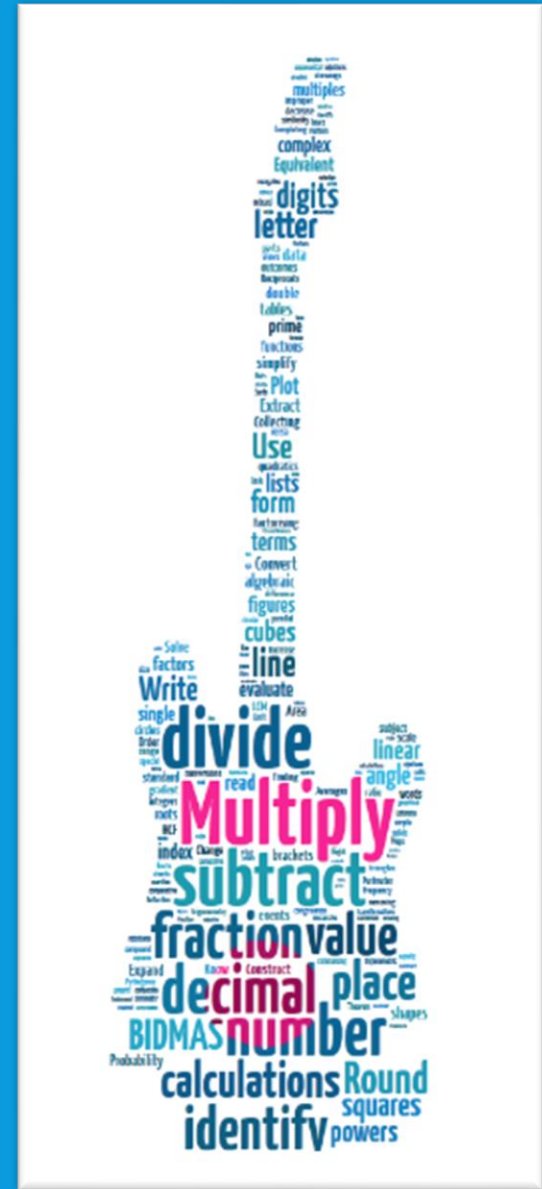
- Children will be given 25 questions and will have 6 seconds to answer each question.
- The test will take place in a secure online space.
- We will report the results to parents and carers as part of the child's end of year report.

# MULTIPLICATION TABLES CHECK

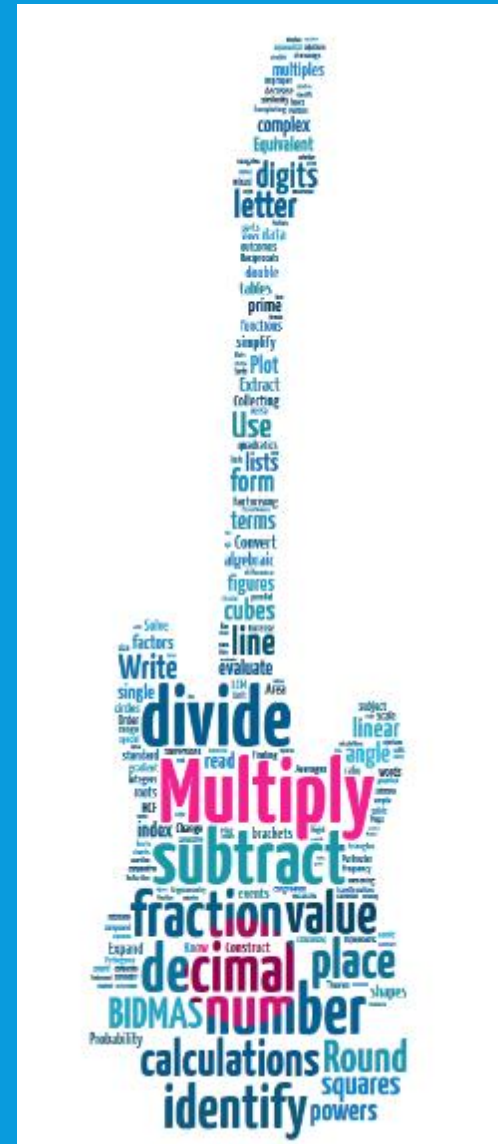
- You can help your child to prepare for this check by working with them at home to learn their Times Tables.

TIMES TABLES ROCK  
STARS IS A FUN, GAME  
BASED WAY TO LEARN  
AND PRACTISE TIMES  
TABLES ON A  
COMPUTER OR TABLET.

EACH CHILD WILL  
HAVE A LOG IN. THEY  
WILL CREATE AN  
AVATAR AND BE PART  
OF A 'BAND'.



PLEASE ENCOURAGE  
YOUR CHILD TO PLAY  
AND PRACTISE AT  
HOME. WE WILL BE  
CELEBRATING THEIR  
SUCCESSSES AT  
SCHOOL TOO.



@TTRockStars



ttrockstars.com

# READING FOR PLEASURE:

There are many little ways to enlarge your child's world. Love of books is the best of all.

—Jacqueline Kennedy Onassis





# WHY IS IT IMPORTANT?

- Of all the subjects taught in school, reading is first among equals - the most singular in importance because all others rely on it. Excellence in almost any academic subject requires strong reading.
- People who read lots attain more. They also develop: general knowledge; vocabulary; a better attitude to writing; higher overall attainment; emotional awareness; a wider understanding of the world and greater expression through speech and writing.
- Significant correlation between reading ability and GCSE results across all subjects. Children who are weak readers will struggle as much in maths and science at GCSE as they do in English and in arts subjects.

# WHY IS IT IMPORTANT?

- The consequences of illiteracy are immense:
  - reduced access to higher education;
  - more limited job choices;
  - on average, lower income;
  - higher risk of permanent exclusion;
  - poor health;
  - poor housing;
  - more likely to have a mental health problem;
  - higher risk of imprisonment;
  - shorter life expectancy.

# HOW CAN YOU SUPPORT?

- Read every day with your child for at least 15 minutes a day.
- Encourage your child to read a wide range of reading material - fiction, non-fiction, poetry, newspapers and magazines.
- Use our Top 20 or Book of the Month suggestions to help explore a wider range of authors and genres.
- Talk to your child about what they are reading.
- Create a Toppsta profile and enter giveaways to win new books for your child to review - encourage them to share their opinions about what they have read.
- Take them to the library.

# READING HOMEWORK:

- We use the Accelerated Reader programme. Children will take an online reading test at least three times a year. The results of this test give children a ZPD, which is basically a range from which to choose books from.
- Children can then borrow books from our school library, within their ZPD.
- Once they have read their book, they take an online quiz. If they pass this quiz, extra points are assigned to their accounts. Their 'word count' also increases. These quizzes can be taken at home.
- Reading records must be signed to say you have heard them read at home.

# HEARING CHILDREN READ AT HOME:

- This should happen for at least fifteen minutes each night.
- Try to make this a special time for you and your child – it should not feel stressful or pressurised for the reader.
- Please focus your attention entirely on your child for this time. Turn off devices and remove other distractions.
- Use strategies such as echo-reading or choral reading to help your child's fluency and expression.
- Even the most confident readers need to be heard reading aloud – encourage older pupils to read a page or two aloud, before then reading independently.

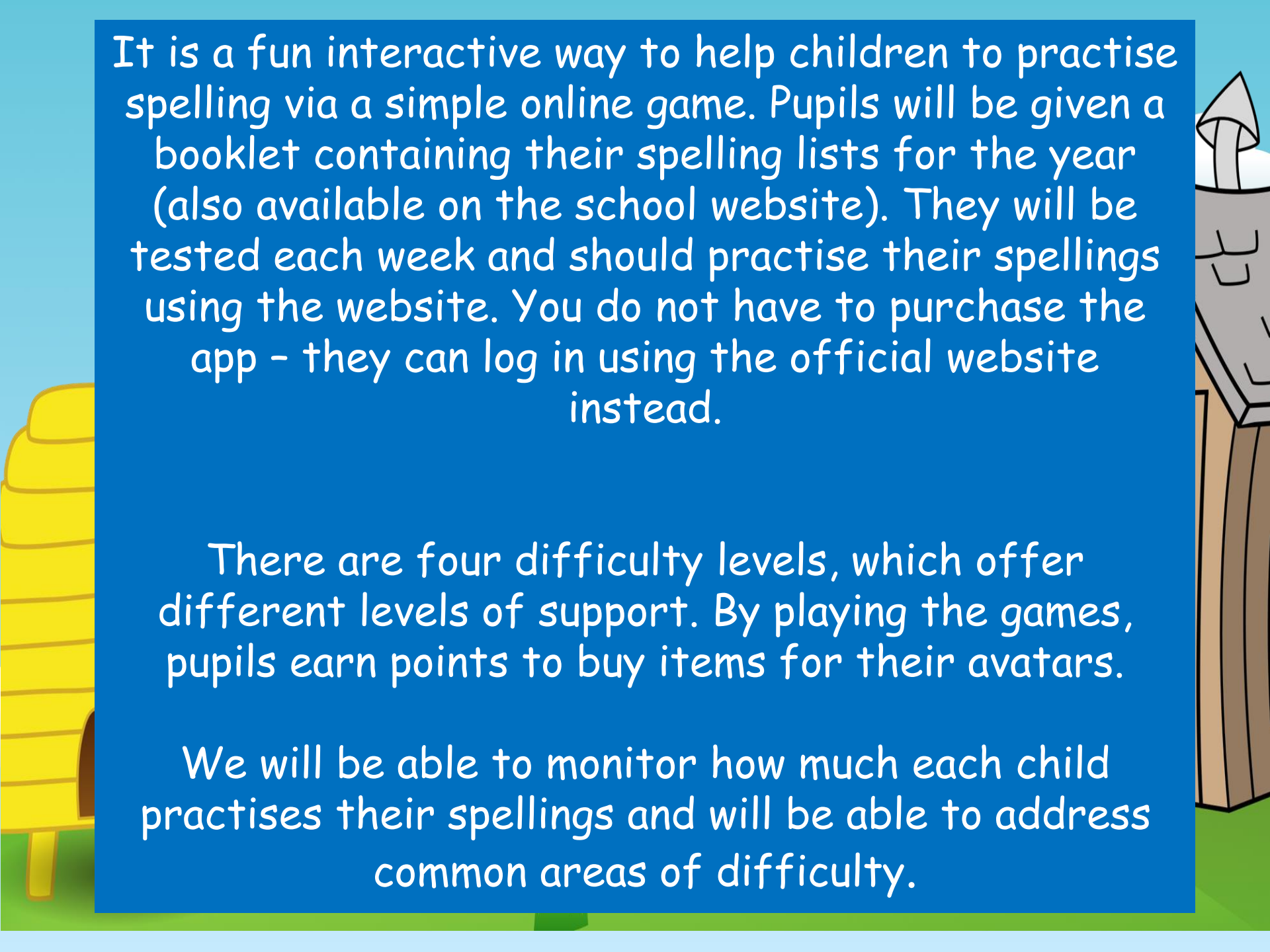
# READING RECORDS:

- Each child has a reading record, which must be signed at least three times a week.
- Children who have their diary signed at least three times per week will be entered into a termly prize draw.
- Teachers will check diaries weekly.
- If a child does not have their diary in school, they will not be able to receive their reading star for that week. Children must collect at least ten stars to enter the prize draw.

# Spelling Shed

The background of the slide features a bright blue sky with a few white clouds. On the right side, there is a cartoon illustration of a wooden shed with a grey roof and a chimney. A small, friendly-looking bee with yellow and black stripes is perched on the edge of the roof. On the left side, there is a yellow beehive with a small brown entrance. Another bee is visible near the entrance of the beehive. The ground is green with some small tufts of grass.

Spelling Shed is used in year 4. It will form part of your child's weekly homework.



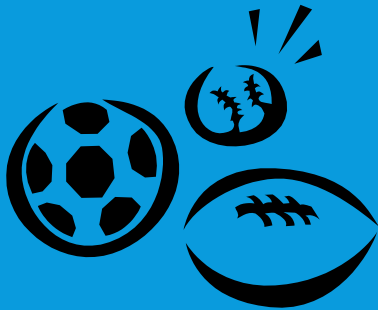
It is a fun interactive way to help children to practise spelling via a simple online game. Pupils will be given a booklet containing their spelling lists for the year (also available on the school website). They will be tested each week and should practise their spellings using the website. You do not have to purchase the app - they can log in using the official website instead.

There are four difficulty levels, which offer different levels of support. By playing the games, pupils earn points to buy items for their avatars.

We will be able to monitor how much each child practises their spellings and will be able to address common areas of difficulty.



# PE



- PE kits should be kept in school at all times.
- Kit consists of black pumps, black shorts and a white t-shirt.
- In the winter, pupils are allowed plain tracksuits for outdoor sports.
- Indoor kit must still be kept in school during winter months, children are not expected to wear tracksuits inside.

# TRIPS

- All trips will now be charged. Parents will be required to make a voluntary contribution and if the cost of the trip is not covered it will be cancelled.
- We will no longer be asking for a £10 school fund contribution and are no longer in a financial position to subsidise these trips.

# SILVER STAR AWARDS



- St. Bernadette's School rewards good behaviour.
- Children in Year 4 work towards their behaviour certificate in the Autumn Term and their Silver Star Badge during the Spring and Summer Terms.
- If children lose their badges, new ones may be purchased by sending £1 in a labelled envelope into school.

# ATTENDANCE

- 95% - 100% is acceptable (Illness)
- Phone call to the office on first day of absence, followed up with letter on return to school.
- If a medical appointment has to be in school time, please forward letter / slip to school.

# ATTENDANCE

- Children can monitor their own attendance record in their Home/School Communication Diary. There is also a whole school display in the dining hall and a reward for the best attending class every term. 100% attending pupils have an own clothes day termly and everyone who has attendance over 94% is entered into a termly raffle.

Open and honest  
communication

Appropriate and  
effective teaching  
and learning

A Partnership  
approach

# St Bernadette's SEND Offer



Hello and welcome! My name is Mrs Bhella and I am the SENCo. I work with children, teachers, parents and agencies to ensure that our pupil's needs are met.

Please visit our School Website to find out what we can offer you, if you think your child has special educational needs.

**SENCo means Special Educational  
Needs Co-ordinator**

# Open and Honest Communication

How to speak to the SENCo if you have a concern.

- We always encourage you to talk to your child's Class Teacher in the first instance.
- Speak to a Member of the Office Team to find out when the SENCo may be available.
- Make an appointment to see her or ask if she can telephone you.
- You can also email her direct on [r.bhella@stberns.bham.sch.uk](mailto:r.bhella@stberns.bham.sch.uk)
- Direct phone number - 0121 783 7232 (option 3)

We can hold review meetings with Parents/Carers during the school day so that you can find out how your child is doing in school.

THANK YOU