

# St Bernadette's Catholic Primary School

Hobmoor Road, Yardley, Birmingham, B25 8QL

Telephone: 0121-783-7232

Website [www.stberns.co.uk](http://www.stberns.co.uk)

Twitter: @StBernsPrimary

e-mail: [enquiry@stberns.bham.sch.uk](mailto:enquiry@stberns.bham.sch.uk)



Newsletter 2

24<sup>th</sup> September 2021

*At St Bernadette's we are fully committed to safeguarding our children. We expect all staff, parents and visitors to share this commitment.*

**Reflection-** The most beautiful things in life are not just things. They're people and places, memories and pictures. They're feelings and moments and smiles and laughter

## Operation Encompass

We are pleased to announce that we are an Operation Encompass school. Operation Encompass is a police and school early intervention safeguarding information partnership which supports children experiencing domestic violence and abuse. Please see the attached letter for further information.

## Communication

From time to time we will send communication to parents via text message or email. Please take time to read this communication through carefully before contacting the office. There have been incidents where parents have contacted the office asking about information that has clearly been communicated therefore increasing workload for staff who are already very busy. Thank you for your support in this matter.

## Communication with class teachers

If you need to communicate with your child's class teacher, please try to do so using the year band email accounts that have been created rather than trying to speak to them at the end of the school day. The email accounts take the format of the child's year in school followed by @stberns.bham.sch.uk. For example, if you wish to contact a member of staff in Nursery the email would be [nursery@stberns.bham.sch.uk](mailto:nursery@stberns.bham.sch.uk), for staff in Reception the email would be [reception@stberns.bham.sch.uk](mailto:reception@stberns.bham.sch.uk), for staff in Year 1 the email would be [year1@stberns.bham.sch.uk](mailto:year1@stberns.bham.sch.uk) and so on.

## Diary Dates

### **Tuesday 28<sup>th</sup> September**

9:00am Year 4 Mass (School)

### **Friday 1<sup>st</sup> October**

Feast of St. Therese of Lisieux (3TK own clothes)

### **Monday 4<sup>th</sup> October**

Feast of St Francis of Assisi (RND own clothes)

### **Wednesday 6<sup>th</sup> October**

9:30am Whole School Harvest Mass (Church)

### **Monday 11<sup>th</sup> October**

Reading Open Week – Year 1 -Year 6

### **Monday 18<sup>th</sup> October**

International Week

### **Friday 22<sup>nd</sup> October**

Feast of St John Paul II (4CB own clothes)  
Feast of St. Jude (for 28th -5KH own clothes)

### **Monday 25<sup>th</sup> – Friday 29<sup>th</sup> October**

HALF TERM HOLIDAY

### **Monday 1<sup>st</sup> November**

INSET DAY

### **Wednesday 3<sup>rd</sup> November**

2:15pm – Year 6 Confirmation Meeting

### **Tuesday 9<sup>th</sup> November**

Parents' Evening (Maths focus)

### **Wednesday 10<sup>th</sup> November**

10.00am - New Parents Meeting  
Parents' Evening (Maths focus)

## Reporting Pupil Absence

Please use the form on the school website to report school absence for your child. This form can be found using the following link: <https://www.stberns.co.uk/pupil-absence>. This method will allow school to have a written record of any absences and hopes to alleviate some of the congestion that occurs on the telephone lines when absences are reported.

## PCR Test results

If your child has symptoms and has been for a PCR test, please provide evidence to the school of the result so that we can record any absences correctly. If your child has been sent home with COVID-19 symptoms, school will require proof of a negative test result before they return, otherwise they will need to isolate for a period of 10 days. Please remember, if your child does test positive for COVID-19 then they should isolate for ten days from the day after the date of the positive test or the onset of symptoms if this was earlier. Your child may return to school on the eleventh day if they are well.

## COVID-19 Reminders

### When to self-isolate

Self-isolate straight away and get a [PCR test \(a test that is sent to the lab\) on GOV.UK](#) as soon as possible if you have any of these 3 symptoms of COVID-19, even if they are mild:

- a high temperature
- a new, continuous cough
- a loss or change to your sense of smell or taste

### You should also self-isolate straight away if:

- you've tested positive for COVID-19 – this means you have the virus
- someone you live with has symptoms or tested positive (unless you are not required to self-isolate – check below if this applies to you)
- you've been told to self-isolate following contact with someone who tested positive – [find out what to do if you're told to self-isolate by NHS Test and Trace or the NHS COVID-19 app](#)

### When you do not need to self-isolate

If someone you live with has symptoms of COVID-19, or has tested positive for COVID-19, you will not need to self-isolate if any of the following apply:

- you're fully vaccinated – this means 14 days have passed since your final dose of a COVID-19 vaccine given by the NHS
- you're under 18 years, 6 months old
- you're taking part or have taken part in a COVID-19 vaccine trial
- you're not able to get vaccinated for medical reasons

Even if you do not have symptoms, you should still:

- get a [PCR test on GOV.UK](#) to check if you have COVID-19
- follow advice on [how to avoid catching and spreading COVID-19](#)
- consider limiting contact with [people who are at higher risk from COVID-19](#)

### How to self-isolate

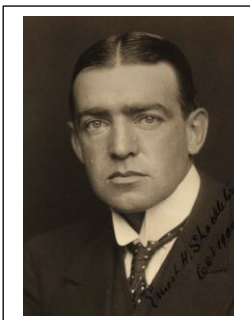
You must not leave your home if you are self-isolating

### Don't

- Do not go to work, school or public places – work from home if you can
- Do not go on public transport or use taxis
- Do not go out to get food or medicine -order it online or by phone, or ask someone to bring it to your home
- Do not have visitors in your home, including friends and family – except for people providing essential care
- Do not go out to exercise – exercise in your home or garden, if you have one

## Person of the Fortnight

Every two weeks we will be sharing new information about a range of different important figures: scientists, athletes, musicians, etc. to help increase the children's aspirations, general knowledge and cultural capital. This week that person is Ernest Shackleton. Young Ernest grew up a farm in County Kildare, Ireland. From an early age he dreamt of travelling far and wide – further than any traveller had been before. His passion for exploration and eternal optimism inspired him to lead one of history's most treacherous journeys to the Antarctic.



## Labelling of Items

Please make sure that you label all items of clothing (including shoes and PE footwear) to reduce the accidental sharing of uniform and uniform going missing. Please also ensure that items such as lunchboxes, reading records and water bottles are also clearly labelled with your child's name.

## Secondary Schools Applications

All children in Year 6 are required to complete an application for Secondary School in September 2020 online. Details can be found online at [www.birmingham.gov.uk/schooladmissions](http://www.birmingham.gov.uk/schooladmissions).

Please ensure that you do your research about potential schools by looking at their websites and use all of the choices available. Make sure you have read the admission arrangements fully for the schools you are interested in and know how likely it is that your child will be offered a place there. It is important that you include at least one realistic preference for a school that your child would have met the criteria for in previous years. Please note that some local Catholic schools require you to complete additional information regarding baptismal details. The final date for acceptance of preferences and online applications is 31st October 2021.

Date for acceptance of preferences and online applications is 31st October 2021.

**If you would like help completing your form online we will be inviting parents in on Wednesday 29<sup>th</sup> September at 9am.**

**Please contact the office if you would like to attend.**

## Homework

Please ensure that your child is completing their daily reading and spelling homework and that you are signing their School Planner regularly. English homework is set on a Tuesday for completion by Friday. Maths homework is set on a Friday for completion by Tuesday. Both English and Maths homework is set on the Seesaw platform. Children in KS2 also have access to Times Tables Rock Stars (TTRS) software to enable them to learn and practise their times tables in a fun and interactive way.

## Car Parks and driveways

The school car parks are solely for the use of staff and authorized visitors. Please ensure that you do not obstruct the car parks or driveways. Please also ensure that when entering and exiting school that the designated paths are used and that pupils and parents do not walk across the car parks.

## Harvest

Our Harvest Mass will take place on Wednesday 6<sup>th</sup> October. It has been a tradition at St Bernadette's over the years to ask families to make a donation of tinned or dry goods that we then donate to homeless charities in Birmingham. If you would like to make such a donation it would be gratefully received. Please send any food items into school with your child during the week commencing 4<sup>th</sup> October.

## Make time for Breakfast!

Please make sure that your child has a good breakfast before coming into school. It is so important to help them get through the morning. If on the odd occasion your child has missed breakfast, please let us know because we do not want them going hungry.

## School Tuck

Can I please remind parents of children in Year 3 to Year 6, if they are sending tuck into school with their child for consumption during break time, it should be a healthy snack, consisting of fruit. Chocolate, sweets and crisps will not be allowed. Grapes and cherry tomatoes must be cut up. Nursery, Reception, Year 1 and Year 2 are now being provided with fruit from the school fruit scheme and therefore do not require any tuck.

## Attendance

Well done to the following classes who have had the best attendance in their key stage. F

**FS/KS1 - RSD**

**KS2 – 3EH**

## Year 3 Residential

Parents in Year 3 have received information regarding a residential that is planned to take place in March 2022 for two nights, three days to Conover Hall in Shropshire. Places for this residential are limited so if you wish your child to attend, please ensure that you complete the necessary information on Parent Pay. Numbers will be confirmed next week so it is vital that this information is completed before then. You will be unable to add your child to the list once numbers have been confirmed.

## Medical Appointments

Please book medical appointments outside of school hours where possible. If this is not possible, please can you provide the office with evidence of the appointment so that the absence can be recorded as 'M' (medical) and can be taken into consideration when looking at attendance. We will accept evidence in the form of text message, letter, appointment card/slip, prescription, or email.



## Head Boy and Girl

Congratulations to the newly elected head boy and head girl and their deputies who were democratically elected by their peers in Year 6 after presenting their manifestos. There were many well thought out and comprehensive manifestos presented by various children, so well done to all that took part in the election. The successful children were:

**Head boy: Jithin**  
**Deputy: Ashin**

**Head girl: Saoirse**  
**Deputy: Surina**

## Class Saints

Each class in school is dedicated to particular saint. To mark the feast day of each saint a class will have the opportunity to come into school in their own clothes. Children in each class will also study their chosen saint and learn facts about their life.

- **Friday 1st October is the feast of St Therese of Lisieux – class 3TK will celebrate this feast day**
- **Monday 4th October is the feast of St Francis – Class RND will celebrate this feast day.**
- **Friday 22nd October is the feast of St John Paul II – class 4CB will celebrate this feast day.**
- **Tuesday 28<sup>th</sup> October is the feast of St Jude – Class 5KH will celebrate this feast day on Friday 22<sup>nd</sup> October.**

## Data and Consent Form

You will soon be receiving a data and consent form. Please read the form carefully and sign each of the statements to say you consent to them. Please ensure that you have read both the front and back of the form and signed it where appropriate. The form can be returned to school with your child to be given to their class teacher.

## Worried about a child?

If you have concerns about the safety and/or welfare of a child or young person then please contact one of the designated Safeguarding Leads in school: Miss Cowings, Mr. Lavin, Mr. Carroll or Miss Connaire. Alternatively, you can contact Birmingham Children's Advice and Support Service on 0121 303 1888.



## October – the month of the Holy Rosary

We will soon be in the month of October which is the month dedicated to the Rosary. The Rosary is a prayer to remind us that Jesus loved us so much that he died on the cross for us. The rosary tells the story of Jesus' life in four parts:

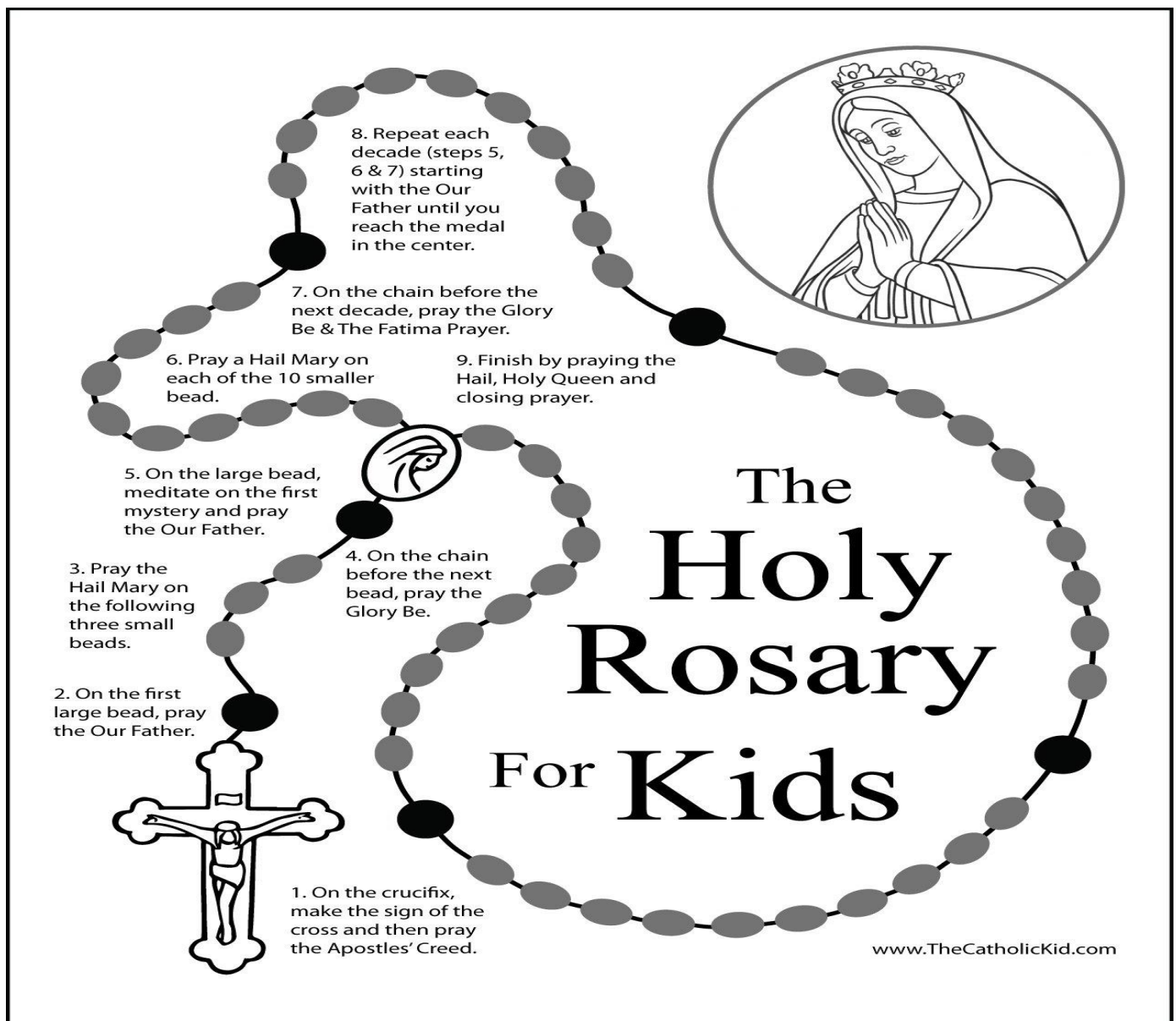
- The Joyful Mysteries (prayed on Monday and Saturday)
- The Sorrowful Mysteries (prayed on Tuesday and Friday)
- The glorious Mysteries (prayed on Wednesday and Sunday)
- The Luminous Mysteries (prayed on Thursday) Catholics have been given a special gift in the Rosary.

Each time we pray the Rosary we should focus on Jesus' life as well as a special person or intention that we want to pray for. The Rosary is a particularly special prayer to our school as it is the prayer which Our Lady taught St Bernadette to pray. Some resources to help pray the Rosary at home are available on the following website:

[www.tentenresources.co.uk/rosary-for-parents](http://www.tentenresources.co.uk/rosary-for-parents)

The password to access this information is: **ROSARY**

I hope you will find these resources useful in focusing and engaging your child in this special prayer.



## Special Certificates

Each week a child from each class is nominated to receive a special certificate through the post. The pupils who are awarded these certificates have shown that they really understand what it means to live as Jesus taught us, perhaps by being particularly kind or helpful. Well done, to the following children:

CLASS	NAME	REASON	CLASS	NAME	REASON
Nursery (Blue)	Reyah	For being a superstar in Nursery	Nursery (Red)	Hughie	For always joining in during group time and trying so hard to always listen.
Nursery (Green)	Grace	For settling in quickly and being so sensible.	Nursery (Yellow)	Orlagh	For good listening and following the nursery routine.
Nursery (Orange)	Umaima	For settling in so quickly and always showing good listening.	3TK	Rumaisa	For outstanding behaviour at all times.
				Aliza	For excellent listening in class and always trying hard in lessons.
RSD	Adil	For being a superstar!	4RW	Reo	For always trying his best – well done!
	Kiera	For being a superstar!		Amiah	For her fabulous acting skills.
RND	Isaiah	For settling into Reception really well, well done!	4CB	Cara	For fantastic effort in archery on physical health day.
	Aoife	For always doing the right thing with a smile on her face!		Kayden W	For demonstrating amazing listening skills and effort in curling on physical health day.
RPD	Esther	For being a very kind and thoughtful friend!	4CM	Kaashif	For fantastic archery skills on physical health day.
	Orla	For being a great role model in the classroom. You're a star!		Kacie-Leigh	For being a great team player during physical health day.
1OB	Aaron	For using beautiful manners and being kind to others in class.	5EB	Daisy	For showing a calm, work attitude and being helpful with jobs in the morning.
	Tayah	For always trying hard during lessons and sharing fantastic ideas.		Kelvin	For working hard and showing an excellent attitude to school with exemplary manners.
1EG	Tehya	For always using her manners and working hard.	5KH	Keevie	For being so kind, helpful and supportive to her peers whilst at the Ackers
	Ruth	For giving great answers during lessons.		Mason	For showing such bravery at the Ackers.
2COT	Carmel	For excellent answers in RE lessons	5LC	Nataniel	For showing a keen interest in learning and always participating in lessons.
	Leon	For being a kind and thoughtful member of our class		Gerline	For being the first person in our class to be awarded a handwriting pen.
2SH	Archie	For being an excellent role model to his peers and for a positive attitude to his learning.	6AMJ	Annaiyah	For outstanding climbing at The Ackers!
	Melody	For listening carefully during RE lessons and putting her hand up during group time.		Leona	For working hard in every lesson and always making the right choices.
2SF	Nikita	For excellent behaviour and for always trying her best in all her lessons.	6KL	Darcey	An excellent start in Year 6 and displaying perfect behaviour.
	Manasi	For beautiful manners and for writing a wonderful story in English.		Logan	For trying his hardest and being such a positive role model to others.
3EH	Khalil	For being so helpful when he comes into class each morning.	6ZB	Kieran	For being so brave and trying all activities at the Ackers.
	Sienna	For her outstanding behaviour and being such a good role model for her peers		Cheldane	For being a wonderful role model to her peers.
3EL	John-Patrick	For sharing his vast knowledge of WW2 during topic lessons.			
	Harley	For a superb piece of work about the signs and symbols of Baptism.			

# Operation Encompass Letter to Parents

Dear Parent/Carer,

I am writing to inform you that with effect from September 2021, St Bernadette's Catholic Primary School will be taking part in a joint operation involving Birmingham Children's Trust, Birmingham City Council, and West Midlands Police. This will formally be known as **Operation Encompass**. Operation Encompass has been established to help schools provide in-school support to children who have been present at, exposed to or involved in any domestic abuse incident.

We know that children can be significantly harmed, physically and/or emotionally, during these situations, and that it also negatively affects their learning and behaviour in class.

Therefore, as part of the Operation Encompass procedure, and to help mitigate the resulting negative impact, the school will now receive a confidential phone call or email from West Midlands Police before 9am the morning after a child or young person has been witness to, or involved in, any reported domestic abuse incident.

Here at St Bernadette's Catholic Primary School, we have a dedicated and child-focussed Safeguarding Team. They are specially trained to effectively use the information the Police share, in confidence, and enable the school to provide the right support to any child and their family. We always endeavour to offer the best support possible to our pupils and believe this will be extremely beneficial for all those involved.

More information can be found at <https://www.operationencompass.org/>

However, if you have any concerns or questions regarding Operation Encompass, please don't hesitate to contact me, and I will be happy to discuss them with you.

Yours faithfully

A. Cowings  
Head Teacher

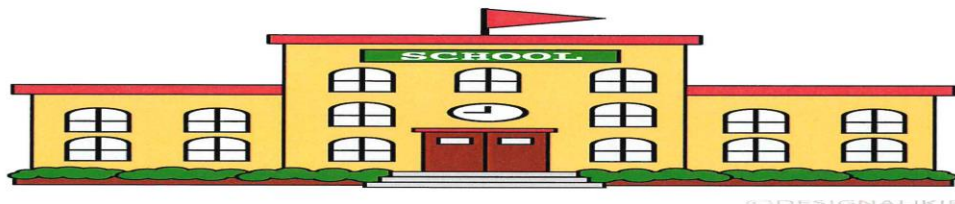
### **Natasha's Law - Allergen food labelling**

Natasha's Law, which comes into force on 1st October, is intended to help those living with food allergies or intolerances to make safe choices when buying pre-packed direct sales (PPDS) food items. As a result of this law, I would like to make parents of children on school meals aware of the following allergens which may be present in the packed lunch choices prepared by the school kitchen.

The packed lunch allergens on the current menu consist of the following:

Ham sandwich/Baguette - gluten  
Cheese roll - gluten and milk  
Tuna Panini - eggs, fish and gluten  
Turkey baguette - gluten  
Cheese baguette - gluten and dairy  
Tuna wrap - eggs, fish and gluten  
Chicken panini - gluten and eggs  
Chick pea and spinach wrap - gluten  
Roast Beef and mayo sandwich- gluten and egg

If you know your child has an allergy to any of the above and you have indicated a packed lunch as their choice of meal, please inform school immediately so that this can be changed.



**FRIDAY 1ST OCTOBER 2021**

**2.00 PM**

**In the Junior Playground**

**(weather permitting)**

**We will be selling the following**

**School Jumper - £15**

**School Cardigan - £15**

**Book Bag - £8**

**PE Bag - £6**

**Tie - £5**

**PLEASE NOTE STOCK IS LIMITED  
SO IT WILL BE ON A FIRST COME,  
FIRST SERVED BASIS.**

**CASH PAYMENTS ONLY - NO CARD PAYMENTS  
PLEASE BRING THE CORRECT MONEY**

**THANK YOU**



# SEND BRIEFING PARENT WEBINAR

October 2021



Parent/Carer Webinars take place regularly throughout the year and cover a number of different topics. Please see the local offer website for further details. Each webinar should last approximately one hour and take the format of a presentation followed by an opportunity to ask questions.

## Speech & Language Therapy Supporting Speech Sounds

Are you concerned about your child's speech clarity? This webinar will give you practical ideas around supporting your child's speech sound development.

**Early Years - Wednesday 6<sup>th</sup> October 1 - 2pm**

<https://www.localofferbirmingham.co.uk/product/speech-language-therapy-supporting-speech-sounds-early-years-6th-october-1pm/>

**Primary Age - Thursday 7<sup>th</sup> October 10 - 11am**

<https://www.localofferbirmingham.co.uk/product/speech-language-therapy-supporting-speech-sounds-primary-age-7th-october-10am/>

### Speakers

**Suzi Blakemore, Samiah Mahmood & Javairia Mahmood  
(SEND Speech and Language Therapists)**

All who book a ticket will be sent a copy of the presentation and a copy of the recording of the webinar.



# SEND BRIEFING PARENT WEBINAR

*October 2021*



Parent/Carer Webinars take place regularly throughout the year and cover a number of different topics. Please see the local offer website for further details. Each webinar should last approximately one hour and take the format of a presentation followed by an opportunity to ask questions.

## Birmingham Early Help Offer Awareness

### Speaker:

### Amina Mushtaq - From Barnardo's

Join the session to learn what Early Help Offer is and how it can help children and families in Birmingham. The session will provide insight into the kind of help available for parents and children and quick self-referral process.

**Friday 8th October 10:00 - 11:00am**

<https://www.localofferbirmingham.co.uk/product/birmingham-early-help-offer-awareness-8th-october-1000am/>

All people who book a ticket will be sent a copy of the presentation and a copy of the recording of the Webinar.



BIRMINGHAM  
CHILDREN'S TRUST



# We Help Families

The early help service supports children, young people and families across the Hodge Hill Locality.

**If you live in any of the following areas we can support you:**

Shard End, Glebe Farm & Tile Cross, Bromford & Hodge Hill, Bordesley Green, Small Heath, Bordesley & Highgate, Heartlands, Alum Rock, Saltley, Ward End and Washwood Heath

Use our **Free and confidential** service, all you need to do is complete a **Family Connect Form** and we will do the rest. Scan the QR code to take you to the form.

You can get support with filling in a Family Connect Form. Ask your School, Health Visitor, Children's Centre, GP, Community or Faith Centre or ring the Early Help Team, details below.

Phone/ Text/ WhatsApp us on: **07976199894**  
Email: [earlyhelp-hodgehill@family-action.org.uk](mailto:earlyhelp-hodgehill@family-action.org.uk)  
Facebook: **Family Action Hodge Hill Early Help**

SCAN ME

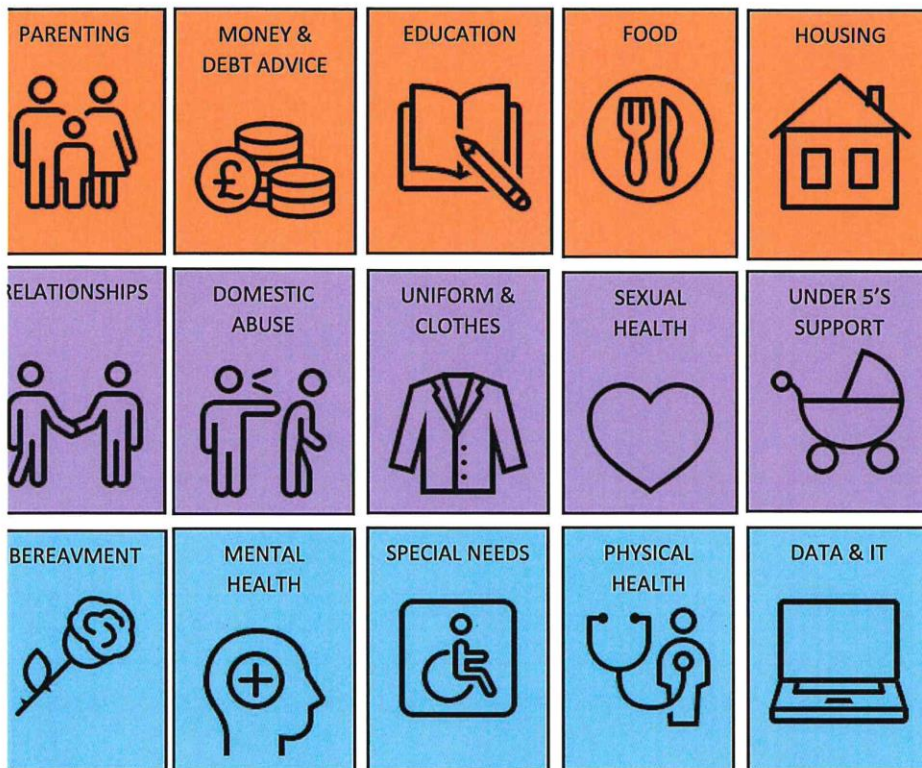


**How to use the QR Code with your smart phone or tablet:**

1. Open the camera app on your phone/tablet.
2. Make sure your device is connected to the Wi-Fi or data.
3. Focus the camera on the QR code.
4. Follow the link **that appears at the top of your screen.**



# We Can Support You With...



Phone/ Text/ WhatsApp us on: **07976199894**

Email: [earlyhelp-hodgehill@family-action.org.uk](mailto:earlyhelp-hodgehill@family-action.org.uk)

Facebook: **Family Action Hodge Hill Early Help**

Scan the QR code to go to our facebook page





# Help for all families in Birmingham



Food  
& Energy



Youth  
Support



Domestic  
Abuse



Emergency  
Funding



Money &  
Debt Advice



Data & IT



Under 5's  
Support



School Uniforms  
& Clothing



Parenting



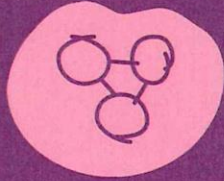
Special Needs  
& Disabilities



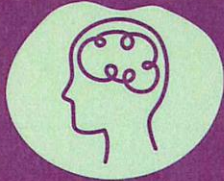
Bereavement



Housing



Sexual  
Health



Mental  
Health



Play

Birmingham





**Birmingham**  
Children's Partnership



**Edgbaston**

EarlyHelpEdgbaston@gatewayfs.org  
0121 456 7821

**Erdington**

ErdingtonFamilies@compass-support.org.uk  
0121 748 8199

**Hall Green**

Hallgreen.families@greensquareaccord.co.uk  
07570 953519 (9:30am to 4:30pm)

**Hodge Hill**

EarlyHelp-Hodgehill@family-action.org.uk  
07976 199894

**Ladywood**

childrenandfamilies@bsettlement.org.uk  
07764 977636

**Northfield**

NorthfieldFamilies@northfieldcommunity.  
07516 918 133

**Perry Barr**

PerrybarrEHnetwork@spurgeons.org  
0121 752 1900

**Selly Oak**

EarlyHelp.Billesley@gmail.com  
0121 441 4556

**Sutton Coldfield**

SuttonEHnetwork@spurgeons.org  
0121 752 1860

**Yardley**

EarlyHelpYardley@barnardos.org.uk  
0121 289 4875

